



Charlotte Jewish Preschool



LEARN

GROW

CONNECT

ISSUE 6

CONTENTS:

- | | | | |
|---|---------------------------------|----|------------------------------------|
| 2 | CJP Identity | 8 | Judaica / Tzedakah |
| 2 | Executive Director's Message | 9 | GROW: Strategic Planning |
| 3 | Mission Statement & Core Values | 10 | CONNECT: Community Partners |
| 4 | LEARN: CJP Programs | 10 | CJP Facilities |
| 5 | Curriculum | 11 | Parent Testimonials |
| 6 | Special Enrichment | 12 | Annual Fund Donors |
| | | 12 | Charlotte Jewish Legacy |

.....
Registration forms available at: charlottejewishpreschool.org



Who We Are



MISSION STATEMENT

Our mission is to provide young children with a secure and loving atmosphere in which to grow, develop a positive self-image, and learn the joy of Jewish life.

CJP Identity

Charlotte Jewish Preschool is a non-profit early childhood program located in Shalom Park that provides high quality half and full day educational programs within an enriched Jewish environment. CJP instills a love of life-long learning and Judaic values in its students, staff, and parents. CJP builds the foundation of children's learning, and bridges relationships in our Jewish community; connecting families through learning, collaboration, and enrichment.

As a result of our educational approach and strong community connections, our students thrive at school, at home, and in the community.

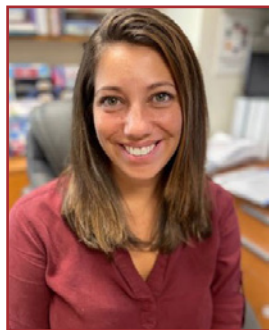
Meet the CJP Executive Director

Brooke Amo was appointed as Executive Director of the Charlotte Jewish Preschool in 2016. Prior to this role, Brooke held various positions at CJP for six-plus years including twice seamlessly stepping into the Interim Executive Director role guiding the school through transitions, and both times the school emerged stronger.

Brooke is a leader who loves, embraces, and embodies the core of CJP, but also has the ability to be a dynamic forward-thinker and advances the school with the growing needs of the community. No one better understands and respects the inner workings of CJP and how to execute and improve on our strategic plan than Brooke.

In addition to her 10+ years of dedicated service to CJP, Brooke holds over eight years of education experience within the Charlotte Mecklenburg School (CMS) system. Armed with both an undergraduate and graduate degree in Elementary Education along with Special Education Certification, Brooke has held chair positions within CMS as well a number of administrative and strategic roles, and has also been part of the International Baccalaureate Leadership Team.

In her past five years as ED, Brooke has overseen and implemented numerous school improvements including programming expansions, research-based curriculum, and learning enhancements, building security upgrades, and leading and finding high-quality professional development opportunities for teachers. Brooke also received certification in Non-Profit Leadership from Duke University in 2018 and is currently pursuing a certification in coaching through the Center for Creative Leadership.



Brooke Amo



B'tzelem Elohim

Created in God's Image

No two people think or act the same. We are all unique, and each person is worth the entire world.



Limud

Learning

Learning inspires growth and reflection, which leads to discovery. As lifelong learners, our minds remain open and we are empowered.



CORE VALUES



Kavod

Respect

With respect at the core of every interaction, we develop trusting relationships and a safe atmosphere in which we can grow.



Kehillah

Community

We are part of a unique community that shares values, which deepen the meaning of everyday experiences for our families.

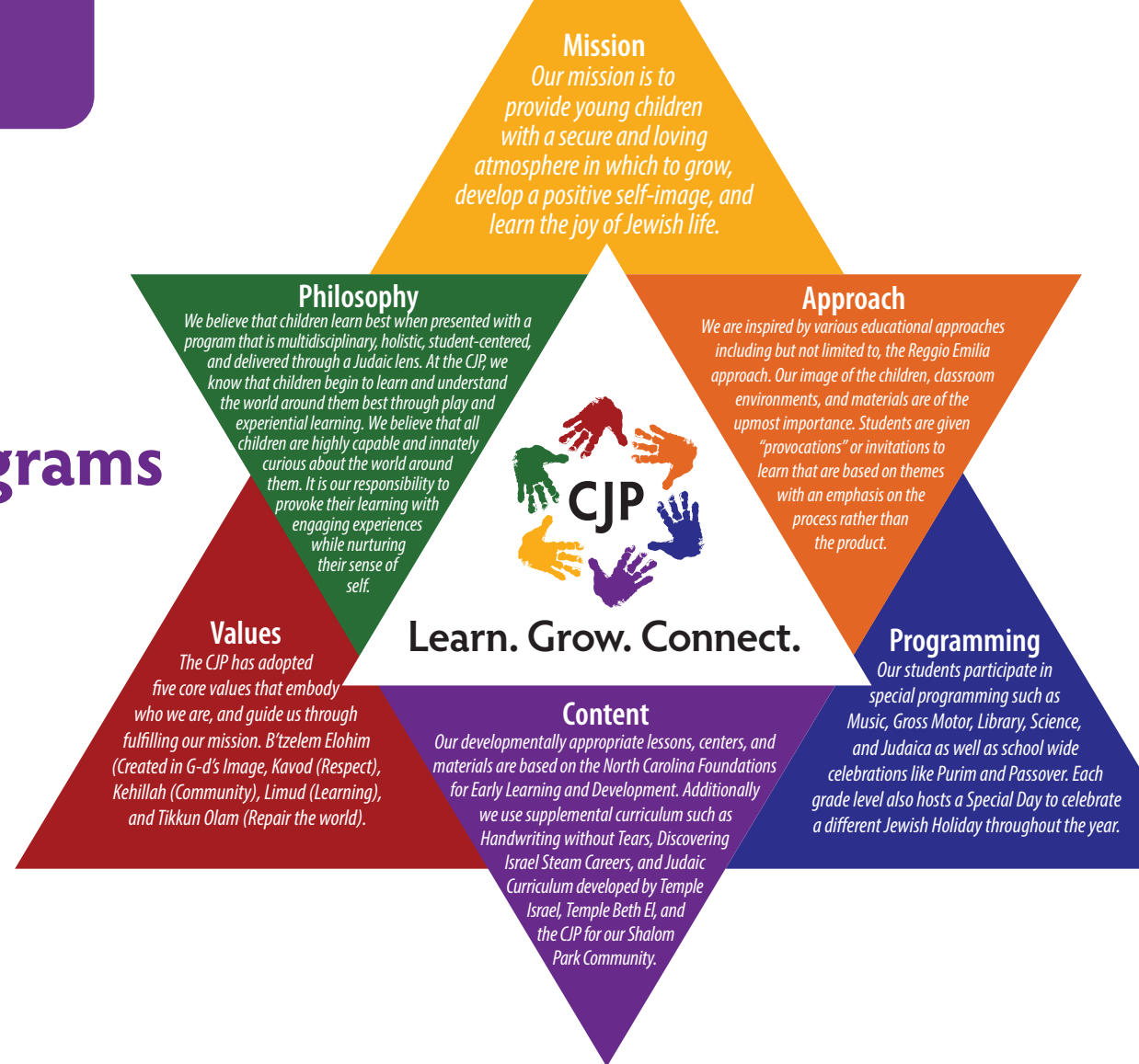


Tikkun Olam

Repair the World

Our work to repair the world is the responsibility of our whole community, from our youngest to our most senior stakeholders. We can all strive to make our world a better place.

CJP Programs



We are proud of our learning environments that have evolved into places of warmth and research. We have worked tirelessly to provide our children with enriching learning environments that reflect our values; most importantly, that preschool children are highly capable learners.

The School Year

Child must be the age of the class by August 31

Full Day Ones students must be one year old prior to start date.

CJP provides half- and full-day early childhood education within an enriched Jewish environment.

Our Full Day Program typically operates from the beginning of August until the middle of June, from 7am to 6pm, and offer classes for Infants through PreKindergarten. The LJCC operates Camp Katan for 6 weeks each summer when the CJP is closed. This ensures that your child has continuous year-round care, if needed.

Our Half Day Program typically operates from the end of August to the middle of June, from 9am to 1pm. We offer a three- or five-day option for our Two- and Three-Year-Old classes, and a five-day option for our PreKindergarten classes.

The LJCC offers additional programs for your children to attend, including swimming, sports, arts, music, and dance. The LJCC will ensure a safe and smooth transfer from CJP to the LJCC beginning at 1pm. Please see the LJCC program guide for more information.

HALF DAY
9am-1pm

Twos: 3 or 5 day option
Threes: 3 or 5 day option
Pre-K: 5 days per week

FULL DAY
7am-6pm

Infants:
Ones:
Twos:
Threes:
Pre-K:

5 days per week

Curriculum

Our curriculum is grounded in our mission to reflect developmentally appropriate learning based on Judaic values. Our approach to learning and early childhood development is multidisciplinary, holistic, student-centered, and delivered through a Judaic lens.

Unique Experiential Learning

At the CJP, we know that children begin to learn and understand the world around them best through play and experiential learning. Our emergent curriculum is designed to respect each child as a capable and unique individual, to foster the diverse ways in which they develop and learn, and to create a nurturing environment.

We are inspired by various educational approaches including, but not limited to, the Reggio Emilia approach. Our classroom environments and materials are of the utmost importance. Students are often given "provocations" or invitations to learn that are based on themes with an emphasis on the "process" rather than the "product" of the activity.

Foundations of Learning

Our developmentally-appropriate goals are based on North Carolina Foundations for Early Learning and Development. These goals serve as tools within our curricular framework to support our teachers in facilitating a student-centered, inquiry-based learning environment that is focused on appropriate learning goals, and opportunities within specific stages of development.

"Foundations" are broken up into 5 different learning domains, followed by subdomains, and finally organized into specific learning goals:

APL

Approaches to Play & Learning Goals:

- Curiosity, Information-Seeking, and Eagerness
- Play and Imagination
- Risk-Taking, Problem-Solving, and Flexibility
- Attentiveness, Effort, and Persistence

ESD

Emotional & Social Development Goals:

- Developing a Sense of Self
- Developing a Sense of Self With Others
- Learning About Feelings

HPD

Health & Physical Development Goals:

- Physical Health and Growth
- Motor Development
- Self-Care
- Safety Awareness

LDC

Language Development/Communication Goals:

- Learning to Communicate
- Foundations for Reading
- Foundations for Writing

CDG

Cognitive Development Goals:

- Constructions of Knowledge: Thinking/Reasoning
- Mathematical Thinking and Expression
- Scientific Exploration and Knowledge
- Creative Expression
- Social Connections



"SPECIALS" Special Days
enrich our everyday experiences!

Special Days

Our students participate in a wide variety of special days where we invite our parents/friends to come and spend time with our students. In addition to the listed days below, each age group has a Judaic-themed special day for parents and children.

Latkes, Lights, and Love

Grandparents' Day

Passover Seders

Pajama Day

Purim Parade

PreK's Trip to Israel

Picnic & Pals

Two's B'shvat

Noon Year's Eve Party



Special Weekly Enrichment

One of the great things about enrolling your children at CJP is their access to incredible specials and enrichment opportunities!

From library to science, music to Judaica, gym to gross motor, our special programs contribute to developing the whole child by getting them actively engaged, moving, singing, reading, and laughing! Our specialists plan dynamic, age-appropriate lessons each week for all students to enjoy.

Story Time at the Center For Jewish Education

CJP students visit the children's room of the Center for Jewish Education twice a month. The library staff is proud and delighted to share their love of language and children's literature with our students!



Gym/Gross Motor

We provide gross motor for our Ones and Twos, and physical education for our Threes, and PreKindergarten classes. Goals include promoting teamwork, a joy of movement and exercise, increasing strength, flexibility and coordination, and improving self-esteem confidence, and motor control.



Music

A music specialist teaches our weekly music classes. Classes are designed to encourage enjoyment of singing and interpretive movement, develop a sense of rhythm, and enhance language development.



Science

Our science is based on the Growth Through Gardening program, and encourages children to ask questions, understand cause and effect, use all of their senses, and learn about the world around them through nature.



MakerSpace

CJP is a school that believes children are highly capable learners who have multiple intelligences and ways to express their thinking. Therefore, we know it is essential to provide a unique space that allows them to create, invent, and explore. A MakerSpace is a unique hands-on student-centered learning environment, outside of the regular classroom, that capitalizes each student's intrinsic motivation and natural inquiry.



Judaica

At Charlotte Jewish Preschool, Judaism is the foundation for the curriculum in each classroom, and serves as a road map for our teachers to develop their lessons. Jewish values are at the heart of classroom themes and they drive the provocations that teachers plan for their students. In addition to a Judaic-infused classroom curriculum, each class attends special classes (Story Time, Music, and Growth through Gardening) throughout the week that also use Judaic values and concepts at their foundation. Students explore all of the chagim (Jewish holidays) from Rosh Hashanah through Shavuot, while learning about the Judaic values that inspire our day-to-day behavior.

INSTILLING OUR FIVE JUDIAK VALUES

When there is not a Jewish holiday forthcoming, students explore Torah stories and Jewish folk tales that inspire the five Judaic values at the heart of our school: *B'tzelem Elohim, Kavod, Kehillah, Limud, and Tikkun Olam*. These values are at the core of every interaction among all of our stakeholders, from the youngest student to the most seasoned teacher.

We find that living and modeling Judaic values is the best way to teach them to our children.

JUDAISM INCORPORATED INTO LEARNING

Dramatic play, science, math, blocks, and fine motor are just some of the avenues students use to explore each holiday and value in their classroom. From shaking the lulav and etrog at Sukkot, to planting seeds on Tu B'Shevat, our students are learning by doing.

Every Friday, the school gathers for a Shabbat service led by our music specialist. We model a traditional Shabbat service by lighting the candles and singing the brachot together, followed by Kiddush, hamotzi, and lively Shabbat music and songs. A Rabbi or Cantor from our partner synagogues, Temple Israel and Temple Beth El, join us for a brief story before students return to their classrooms for challah and grape juice.



Not only do we find it important to teach the concepts and values of Judaism, but we work hard to make sure they live them as well.

GROW

Strategic Planning Overview: Four Initiatives



Engage in Intentional Growth

- Research best practice mission-based growth strategies
- Define future facility needs in collaboration with Shalom Park leadership
- Grow while retaining the essence of CJP's mission and values



Promote a Culture of Community

- Strengthen communication with all stakeholders
- Increase opportunities for family engagement and relationship-building



Invest in Talent

- Recruit and retain high quality staff with competitive compensation and benefits
- Provide professional growth opportunities for staff
- Create sustainable board leadership through recruitment and succession planning



Increase Financial Stability

- Maximize tuition revenue and identify opportunities for alternative revenue sources
- Develop a strategic investment strategy
- Strengthen donor relationships through increased board stewardship



During Shabbat, our students have the opportunity to give tzedakah (charity), coins and dollar bills, for those in need. At the end of the month, we count up the money we have collected and choose an organization to support.

Tzedakah

In the past, we have given tzedakah to: Jewish National Fund, Mitey Riders, Shalom Bayit, Thompson Child & Family Focus, and Classroom Central, among others.

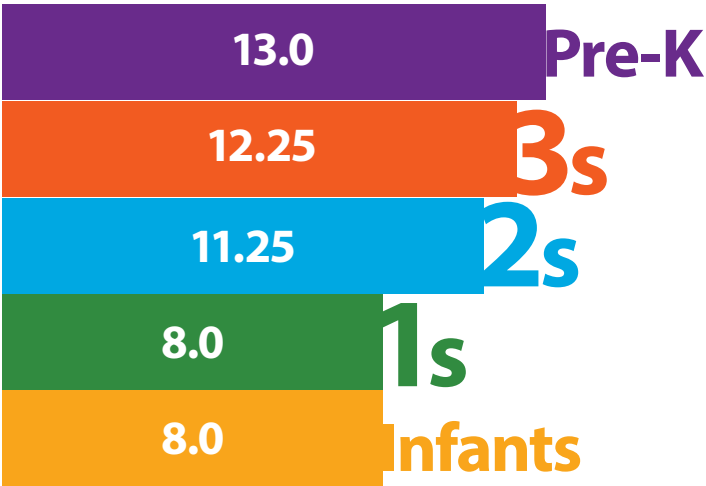
We also support Israeli charities such as Save a Child's Heart, Shalva Children's Center, Israel Sports Center for the Disabled, and Krembo Wings.

A few times during the school year, we organize a drive to collect items for our partners or organizations in need. We support the sister schools of our Temples through school supply drives, and we support Jewish Family Services with food drives throughout the year, as well as a toy drive before Chanukah. Our students learn the value of helping others by actively participating in collecting and distributing items to their recipients.

TEACHER/STUDENT RATIOS

	CJP	VS	State
Infants	1:3		1:5
1s	1:4		1:6
2s	1:6		1:10
3s	1:6		1:15
Pre-K	1:7		1:20

AVERAGE CLASS SIZE



Community Connections

Kehillah (Community) is central to our core values. As a part of Shalom Park, our students, staff, and families enjoy the benefits of community partnerships and resources.

Here are some of the organizations that our CJP children can benefit from and contribute to:

OUR SHALOM PARK

PARTNERS AT WORK



- PJ Library Programs
- Allocations
- Teacher planning sessions
- Story time
- Professional development



- Oasis collaborations
- Splash ground



- Judaica
- Shabbat with clergy at CJP
- Collaboration on Judaica curriculum



- Judaica
- Shabbat with clergy at CJP
- Collaboration on Judaica curriculum



- Facilities
- Custodial services
- Campus security



- Child and family counseling



- *Joined in Education Partner*



- Marketing

CJP Stories

Families are talking...



The Carney Family

“Our experience at the Charlotte Jewish Preschool has been one of the greatest gifts for our family. More than just a school, it’s a genuine community of compassionate, caring, and nurturing teachers, parents, and staff. We’ve experienced firsthand the impact the CJP has had on our daughters’ love for learning and the development of their Jewish identities, and we’ve had the privilege of being introduced to the best support system and friends. We’re so grateful to the CJP for helping us to truly find our home in the Charlotte Jewish community.”

The Lucas Family

“We moved to South Charlotte, so our children could go to a Jewish preschool. We have been blessed with such an amazing school. CJP has brought us lifelong friends, Judaic values to instill in our children, and truly a happy place for McKenzie and Jacob to learn and grow. We can’t imagine what it would be like if we didn’t move to the area. We are so grateful!”



Location



Location

Location

FACILITIES

CJP is located on the Shalom Park campus on Providence Road, just five miles south of Uptown Charlotte. The 54-acre campus brings the Charlotte Jewish community’s resources together in one convenient location. Our parents and students are able to take advantage of opportunities unavailable elsewhere: afternoon activities at the LJCC, Shabbat services at Temple Beth El and Temple Israel, access to the Center for Jewish Education, and much more.



The Hudson Family

“We’ve had both our children at CJP, and we can’t imagine a better place for them. Our daughter just started kindergarten this year, and she was well prepared because CJP is not a daycare, it is a preschool with a robust curriculum where children learn and grow as part of a community. Both of our children have thrived at CJP thanks to the caring teachers and staff. Especially during the pandemic, we had peace of mind knowing that our children were protected and happy while still receiving a wonderful education.”



Charlotte Jewish Preschool
5007 Providence Road, Suite 109
Charlotte, NC 28226
(704) 944-6776

charlottejewishpreschool.org

